

THE WAR WITHIN

UNDERSTANDING THE SCALE OF INTIMATE PARTNER VIOLENCE IN SOUTH AFRICA

FACT SHEET 2

Intimate partner violence (IPV) refers to behaviour by a current or former partner that causes physical, sexual or psychological harm, including physical aggression, sexual coercion, psychological abuse and controlling behaviours.

Intimate partner violence in adults 18 years and older

Physical violence

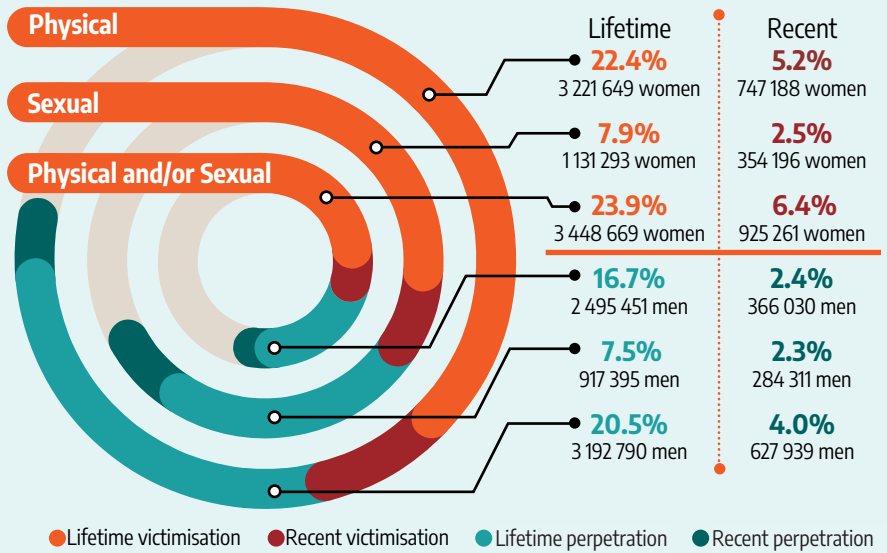
- approximately **1 in 4** women have experienced **lifetime** physical IPV
- approximately **1 in 6** men have perpetrated **lifetime** physical IPV
- approximately **1 in 19** women have experienced **recent** physical IPV
- approximately **1 in 42** men have perpetrated **recent** physical IPV

Sexual violence

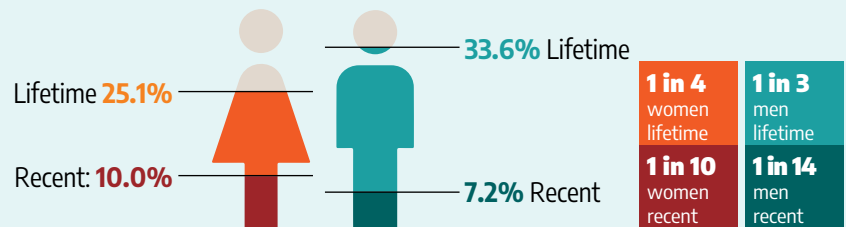
- approximately **1 in 13** women have experienced **lifetime** sexual IPV
- approximately **1 in 13** men have perpetrated **lifetime** sexual IPV
- approximately **1 in 40** women have experienced **recent** sexual IPV
- approximately **1 in 43** men have perpetrated **recent** sexual IPV

Physical and/or sexual violence

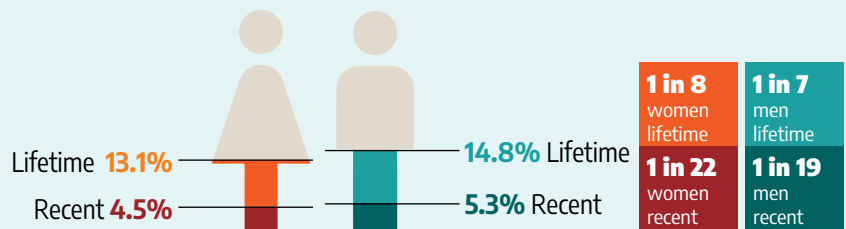
- approximately **1 in 4** women have experienced **lifetime** physical and/or sexual IPV
- approximately **1 in 5** men have perpetrated **lifetime** physical and/or sexual IPV
- approximately **1 in 16** women have experienced **recent** physical and/or sexual IPV
- approximately **1 in 25** men have perpetrated **recent** physical and/or sexual IPV



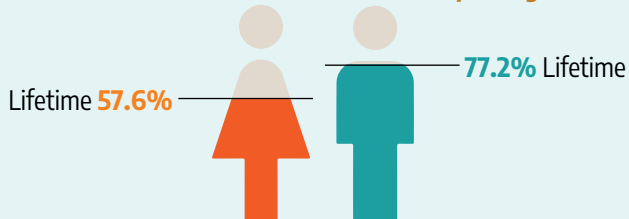
Emotional abuse



Economic abuse



Psychological: Controlling behaviours



Source: Zungu NP., Petersen Z., Parker W., Dukhi N., Sewpaul, R., Abdelatif N., Naidoo I., Moolman B., Isaacs D., Makusha T., Mabaso M., Reddy T., Zuma, Kt. and The SANSHEF Team (2024). The First South African National Gender-Based Violence Study, 2022: A Baseline Survey on Victimisation and Perpetration Fact Sheet 1. Cape Town: Human Sciences Research Council