



**PRESIDENTIAL
YOUTH
EMPLOYMENT
INTERVENTION**



A National Pathway Management Network to connect young people to opportunities

FACTSHEET 1



THE PRESIDENCY
REPUBLIC OF SOUTH AFRICA



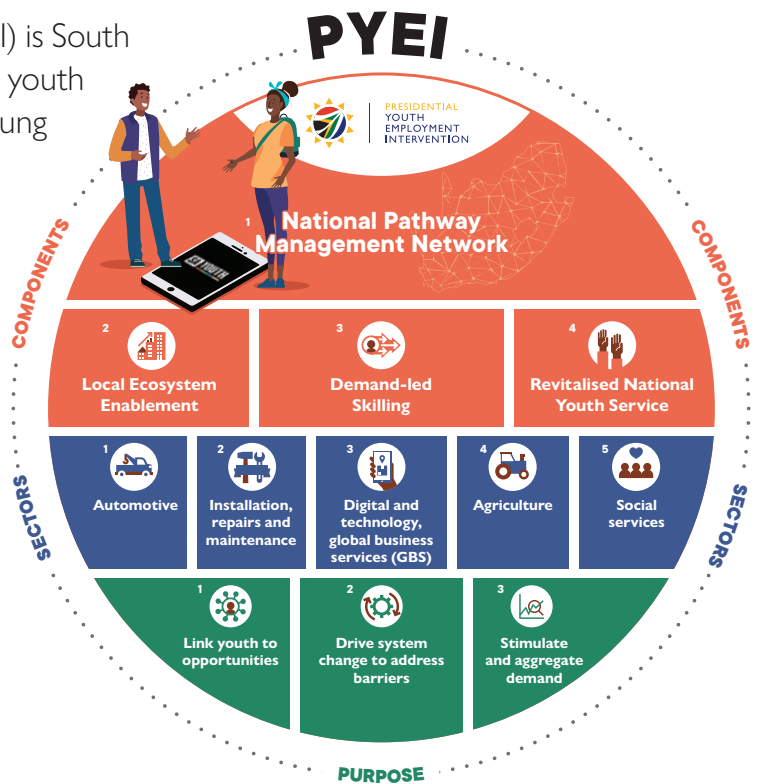
About the Presidential Youth Employment Intervention

The Presidential Youth Employment Intervention (PYEI) is South Africa's most comprehensive effort yet to address the youth unemployment crisis. Its goal is to transition more young people from learning to earning.

The intervention brings together the strengths of numerous government institutions and social partners to deliver more opportunities for young people. It seeks to coordinate, accelerate and enhance existing programmes and unblocks pathways to employment, learning and youth enterprise.

A central component of the PYEI is the establishment of a National Pathway Management Network (NPMN) that guides young people towards opportunities. Other components include a focus on Demand-led Skilling; Local Ecosystem Enablement to facilitate self-employment and enterprise; and a Revitalised National Youth Service (NYS).

Activities focus on growth areas with earning potential for young people. These are: digital, technology and global business services; agriculture; installation repairs and maintenance; social services; and the automotive sector. A Project Management Office (PMO) in the Presidency coordinates the PYEI. Government departments with key roles in employment creation and youth development implement the intervention.



3 key facts about the National Pathway Management Network

1

- The National Pathway Management Network (NPMN) is a 'network of networks', connecting all existing networks serving unemployed young people. The NPMN creates and aggregates learning and earning opportunities and creates a single entry point for unemployed youth to view and access opportunities in the economy, as well as a range of support services. It addresses barriers young people face and provides them with active support to enable pathways into the labour market.

2

- The Department of Employment and Labour (DEL) leads the establishment of the NPMN. DEL works in close partnership with the Presidency, the National Youth Development Agency (NYDA), the Department of Higher Education and Training (DHET), Harambee Youth Employment Accelerator, Youth Employment Service, SALDRU and mPowa. The network also links with several other government departments and entities, civil society, development partners, and the private sector.

3

- The NPMN is enabled by the SA Youth platform which can be accessed for free online or over the phone. It can also be accessed at DEL and NYDA centres around the country. There are already more than 4.1 million young people and more than 2000 opportunity holders on the network and the PYEI will further expand its reach.

Why many young people struggle to find traction in the labour market



Young people in South Africa are among those most affected by the high unemployment level in the country. In the first quarter of 2023, **44.7% of young people between 15 and 34 years were not in employment, education and training.**



There is an urgent need to create more opportunities for young people in South Africa to build skills and find decent work. At the same time, many young people face difficulties accessing those opportunities that exist. Even when they do, they often zigzag along broken pathways, falling in and out of education and short-term work opportunities. This diminishes their chances of consistently participating in the economy and building career paths that allow them to grow and thrive.

THE BARRIERS ARE WELL UNDERSTOOD



Systemic problems include unequal access to quality education, and insufficient opportunities for training that correspond to actual market needs.



There are also very practical constraints, such as the high cost of job seeking, a lack of awareness of support services and difficulty in accessing labour market entry points.



Despite great effort to address these barriers, interventions exist in silos leading to fragmentation. Many interventions do not reach the required scale. Thus, young people cannot easily navigate and use the many existing services and platforms that have been established to support them in moving from learning to earning.

What is the National Pathway Management Network?

The NPMN is a network of networks for young people looking for learning and earning opportunities, enterprise support, resources and support with work seeking. It connects major networks and platforms serving young people, including SA Youth managed by Harambee Youth Employment Accelerator, the Department of Labour's Employment Services of South Africa platform (ESSA), Gauteng Provincial Government's Tshepo 1 Million network and Youth Employment Services (YES), a private sector initiative.

THE NPMN SETS OUT TO ACHIEVE THE FOLLOWING OBJECTIVES:

- ▶ **Accelerate the creation of new opportunities for young people**, for instance by: (i) identifying and implementing interventions to unlock growth opportunities that will absorb new entrants at scale (e.g., in the care and social economy, and agricultural as well as digital and technology sectors); (ii) developing public and private sector partnerships for joint planning and delivery; and (iii) changing policy, regulations and incentives to improve labour absorption by the private sector.
- ▶ **Aggregate learning and earning opportunities for young people.** The NPMN consolidates existing opportunities in one place. It aims to become the go-to platform both for young people and opportunity holders that want to reach them.
- ▶ **Address barriers young people experience when looking for opportunities.** Such barriers include high data costs, lack of access to personalised counselling, qualifications that are not aligned to market needs, and insufficient information about available services and resources.
- ▶ **Support young people to grow their skills and employability.** By using the NPMN, they can access a wide range of relevant employment services and learning opportunities. This allows young people to embark on a long-term growth path towards goals that align with their preferences and strengths.
- ▶ **Generating information to guide future support.** The NPMN provides nuanced information on the skills held by the young people developing their profiles on the network and how they compare to what employers are looking for. This can help service providers adapt training offerings and develop tailored bridging interventions.



PARTNERS IN THE NPMN:

Government departments and entities:

- ▶ Department of Employment and Labour
- ▶ Department of Higher Education and Training
- ▶ Department of Small Business Development
- ▶ Department of Public Works and Infrastructure
- ▶ Department of Science and Innovation
- ▶ Department of Women, Youth and Persons with Disabilities
- ▶ Department of Communications and Digital Technologies
- ▶ Department of Trade, Industry and Competition
- ▶ Gauteng Province (Tshepo 1 million)
- ▶ National Youth Development Agency

Non-government departments and entities:

- ▶ Southern Africa Labour and Development Research Unit (SALDRU)
- ▶ University of Johannesburg with development partners
- ▶ Youth Explorer
- ▶ Harambee (SAYouth.mobi)
- ▶ mLabs
- ▶ Youth Employment Services (YES)
- ▶ National Business Initiative
- ▶ Confederation of Associations in the Private Employment Sector (CAPES)
- ▶ Next Up
- ▶ International Labour Organization
- ▶ GIZ
- ▶ Craft and Design Institute
- ▶ OpenUp
- ▶ Izinga Foundation
- ▶ JobJack
- ▶ Capacitate
- ▶ University of Cape Town
- ▶ YD Co-Lab

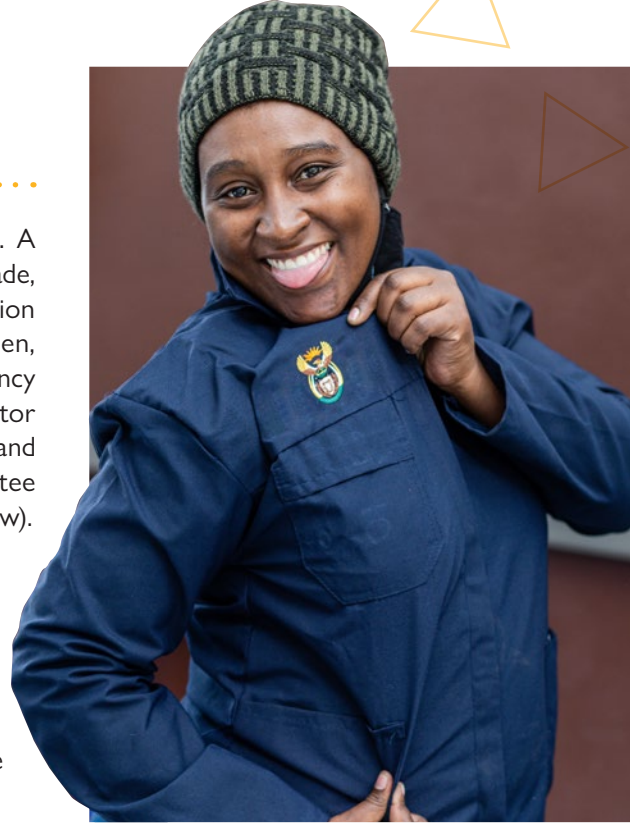
Key activities and delivery

TO ACHIEVE THE OBJECTIVES OF THE NPMN AND GROW ITS REACH AND RELEVANCE, **EFFORTS ARE FOCUSED ON THE FOLLOWING ACTIVITIES:**

Coordination and partnership

The DEL and the Presidency are driving the development of the NPMN. A coordinating committee has been established, including the Departments of Trade, Industry and Competition; Public Works and Infrastructure; Higher Education and Training; Science and Innovation; Small Business Development; Women, Youth and Persons with Disabilities; and the National Youth Development Agency (NYDA). A technical sub-committee brings non-government and private sector stakeholders into the NPMN to develop mechanisms for sharing information and building linkages between partner interventions. Another steering committee coordinates the pilot projects that are driving innovation in the NPMN (see below). In the future, a dedicated organisation will act as an ecosystem manager to work with all partners in achieving the NPMN objectives together.

This broad partnership allows for the joint development of mechanisms that ensure equitable access to opportunities across the NPMN for all young people in the network. The NPMN will further expand cooperation, especially with social and private sector partners that share its objectives and support the principles of free access, youth-centred approaches and inclusive hiring.



Reaching more young people through multiple channels

The NPMN offers improved flows of information between all actors on the network. Young people can view a wide range of services and resources available to them and become more visible to opportunity holders. Once they are part of the network, young people can build a personal profile on the NPMN that links them to the support most relevant to their situation, needs and interests. Through the NPMN, they can also receive assessments and advice that help them navigate the many opportunities across databases.

The NPMN reaches young people through multiple channels:



Easy digital access is available through the zero-rated mobile internet site, **SAYouth.mobi** which is managed by Harambee Youth Employment Accelerator.



The **mPowa app** provides location-based and profile-specific information about services on employment, education and entrepreneurship.



Young people can also link to the network at physical sites, such as the **DEL labour centres or NYDA local offices**.



Telephonic support and career guidance is available **toll free at 0800 727272** and through chatbots on SA Youth services via Facebook Messenger and WhatsApp.



The **Khetha platform** is a career advice portal that provides young people with guidance on choosing a field of study, occupation and career.



Young people can access support and workplace experience opportunities through the **Youth Employment Service (YES)**.

Piloting service expansion

Elements of the NPMN are not yet available everywhere. Linkages to other PYEI components such as Demand-led Skills Development also require strengthening. Pilot projects are delivering insights into how these gaps can best be addressed.

One pilot project is testing how the NPMN can better support intermediation between young people and entrepreneurship support programmes. Another is exploring how the NPMN can facilitate work placements for technical and vocational education and training (TVET) students and graduates.

The NPMN is also testing a new delivery model for promoting the mental health and well-being of marginalised young people who need to reconnect to the education system or labour market. This Basic Package of Support pilot project aims to strengthen young people's sense of agency and improve their self-esteem with interventions that relate to their lived realities. Pilots are further investigating the extent to which ecosystem mapping and linkages are enabled via SA Youth Explorer. This platform has mapped government services and resources available to young people across South Africa.

Results from the pilot projects will inform improvements to the NPMN, including the upscaling of services and the deepening and broadening of support offered through the network.

Incentivising innovation

In October 2021, the DEL, with support from the Presidential Employment Stimulus and in partnership with the Jobs Fund, issued an initial call for proposals for the NPMN Innovation Fund. Successful proposals support practices that address the objectives of the NPMN. Additional calls for proposals are planned as part of the ongoing implementation of the PYEI.

NPMN IN ACTION: Enabling the Basic Education Employment Intervention

The NPMN played a crucial role in the rapid placement of young people in the Basic Education Employment Intervention (BEEI) of the Department of Basic Education. As part of the Presidential Employment Stimulus, the BEEI has created over 600,000 opportunities for young people to date. Provincial departments of education used SA Youth, a central platform of the NPMN, to recruit and place young people into these opportunities. The platform's zero-rating and geo-location capability enabled young people to easily access and apply to opportunities at schools closest to them, allowing even the most marginalised communities to be reached.



PRESIDENTIAL
EMPLOYMENT
STIMULUS



basic education
Department
Basic Education
REPUBLIC OF SOUTH AFRICA



Getting involved

HERE IS HOW TO ACCESS OPPORTUNITIES AND INFORMATION ON THE NPMN:



As a young person, register on [SAYouth.mobi](https://sayouth.mobi), access [Employment Services of South Africa \(ESSA\)](#), the [National Youth Development Agency \(NYDA\) Enterprise Resource Planning \(ERP\) system](#) or check out the [Kheta career advice portal](#). You can also [download the mPowa app](#). Here, you can build your profile and access opportunities in your vicinity for youth service, further learning or work. If you cannot access SAYouth.mobi, look for a [DEL Labour Centre](#) or [NYDA Youth Office](#) near you. You can also call the toll-free hotline at 0800 72 72 72.



As a learning and employment service provider or prospective employer, [register as a partner on SA Youth](#). If you want to support the implementation of the NPMN, please reach out to the Harambee Youth Employment Accelerator for SA Youth (info@sayouth.org.za). If you would like to create opportunities for young people and receive B-BBEE incentives, contact the Youth Employment Service (corporatesupport@yes4youth.co.za).



As a network serving young people, you can become a member of the NPMN. If you are interested, please contact the PYEI using [this link](#).

Further links

- ▶ **PYEI/State of the Nation Website**
www.stateofthenation.gov.za/pyei
- ▶ **SA Youth**
[SAYouth.mobi](https://sayouth.mobi)
- ▶ **SA Youth Explorer**
Explore, visualise and interact with youth-centered data
www.youthexplorer.org.za
- ▶ **Basic Package of Support for Youth - BPSY**
www.cbpep.org
- ▶ **Youth Employment Service**
www.yes4youth.co.za
- ▶ **mPowa**
www.mpowa.mobi



A publication by the Project Management Office in the Presidency of the Republic of South Africa. Downloading, viewing and printing of this content for private and non-commercial purposes only.

With the support of the German Federal Government through the Deutsche Gesellschaft für Internationale Zusammenarbeit (GIZ) GmbH.

